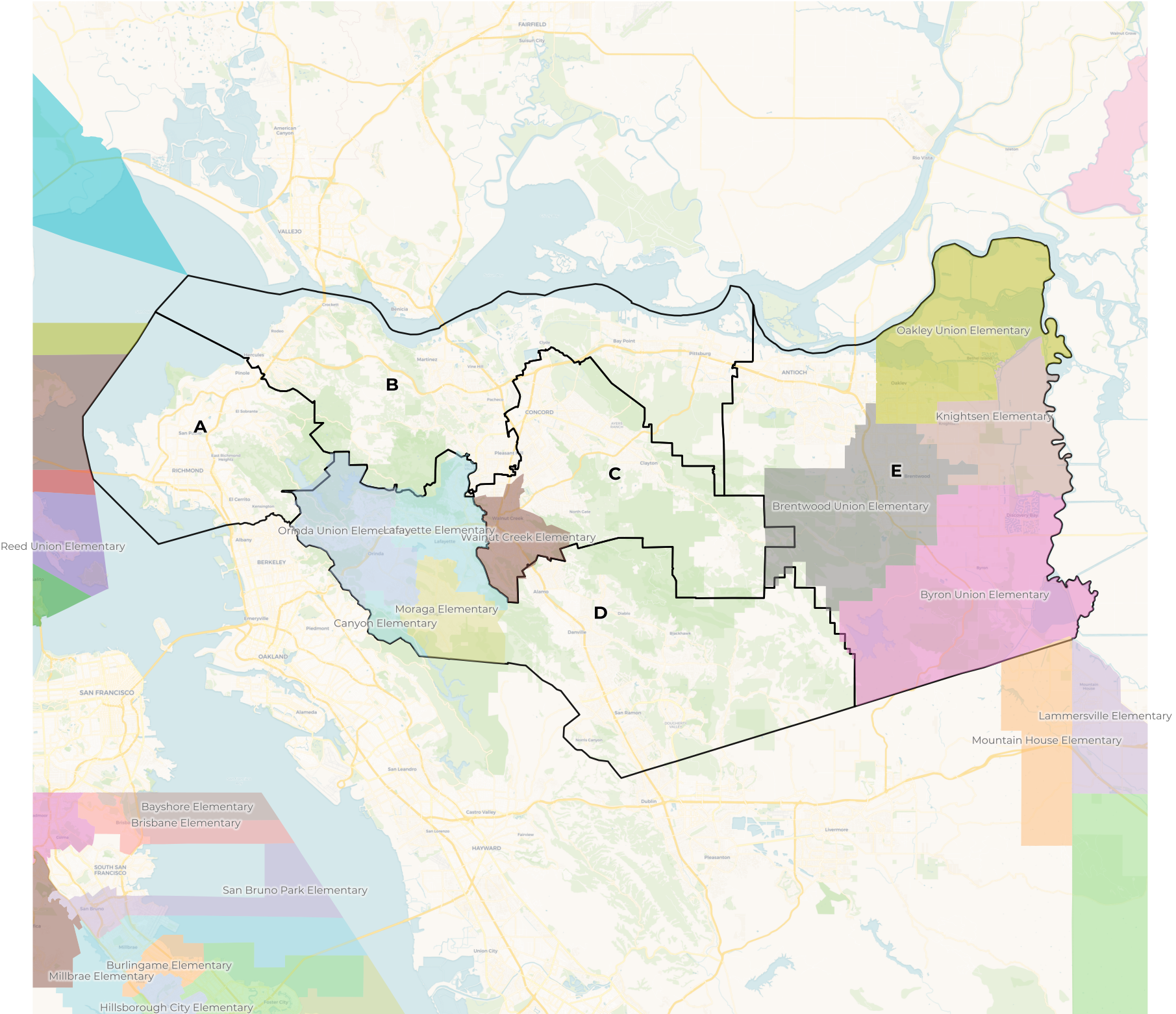


Contra Costa COE  
Draft Plan D - ESD Overlay

REDISTRICTING  
PARTNERS



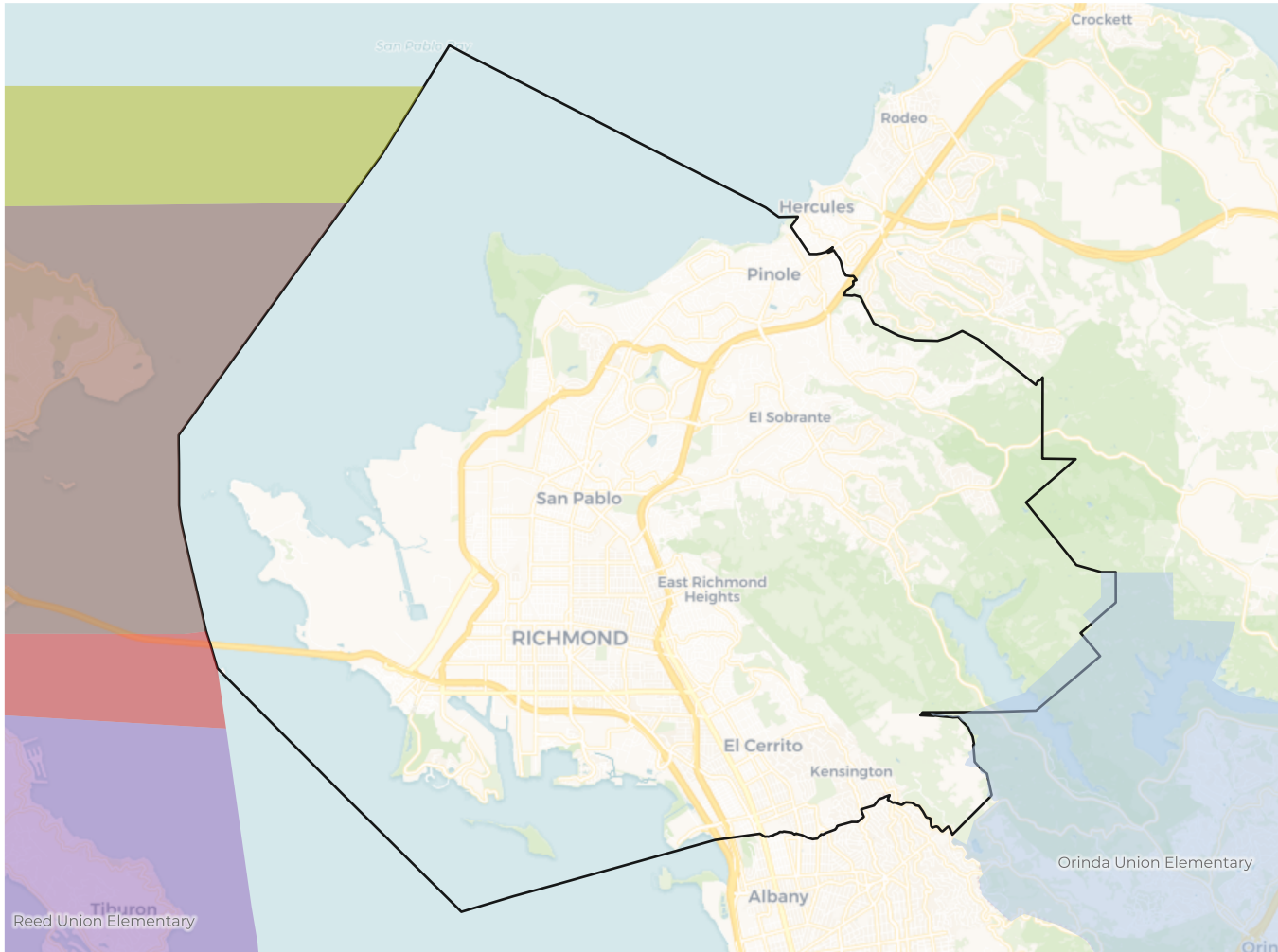
**2020 Census**

	A	B	C	D	E
Population	236,010	226,779	227,828	229,392	248,060
Deviation	2,396	-6,835	-5,786	-4,222	14,446
Deviation %	1.0%	-2.9%	-2.5%	-1.8%	6.2%
Other	66,940	91,322	136,919	137,462	106,454
Other %	28.4%	40.3%	60.1%	59.9%	42.9%
Latino	95,003	70,471	49,896	18,831	81,224
Latino %	40.3%	31.1%	21.9%	8.2%	32.7%
Asian	40,760	42,085	34,194	69,433	28,076
Asian %	17.3%	18.6%	15.0%	30.3%	11.3%
Black	33,307	22,901	6,819	3,666	32,306
Black %	14.1%	10.1%	3.0%	1.6%	13.0%

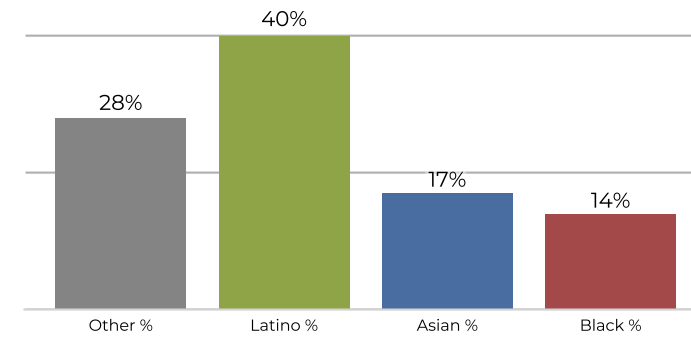
**Citizen Voting Age Population (CVAP)**

	A	B	C	D	E
Total CVAP	140,908	150,061	162,627	147,379	161,969
Other CVAP	52,449	75,947	115,554	105,632	86,363
Other CVAP %	37.2%	50.6%	71.1%	71.7%	53.3%
Latino CVAP	35,138	32,854	22,639	9,448	37,637
Latino CVAP %	24.9%	21.9%	13.9%	6.4%	23.2%
Asian CVAP	26,038	25,004	19,452	29,948	15,157
Asian CVAP %	18.5%	16.7%	12.0%	20.3%	9.4%
Black CVAP	27,283	16,256	4,982	2,351	22,812
Black CVAP %	19.4%	10.8%	3.1%	1.6%	14.1%

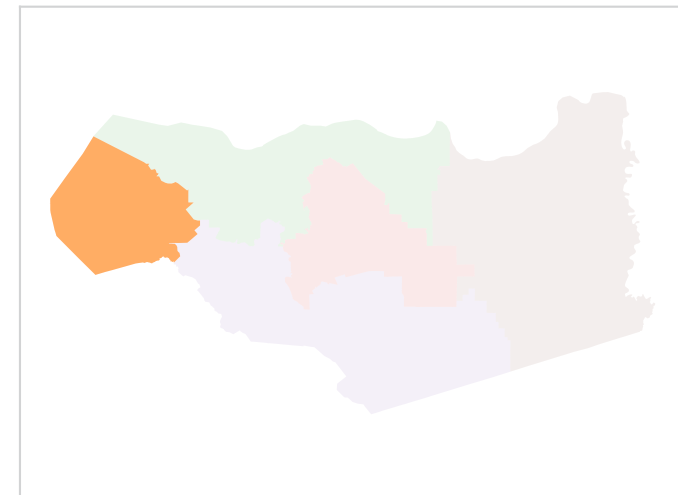
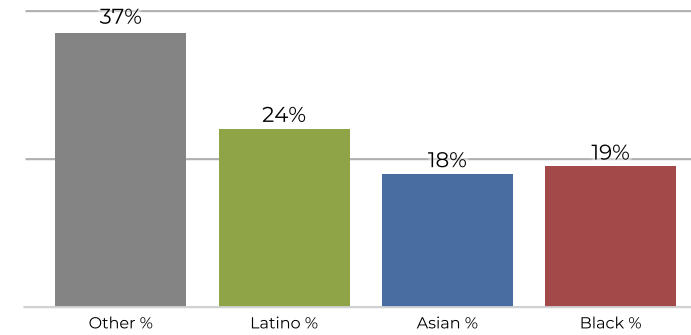
**District A**



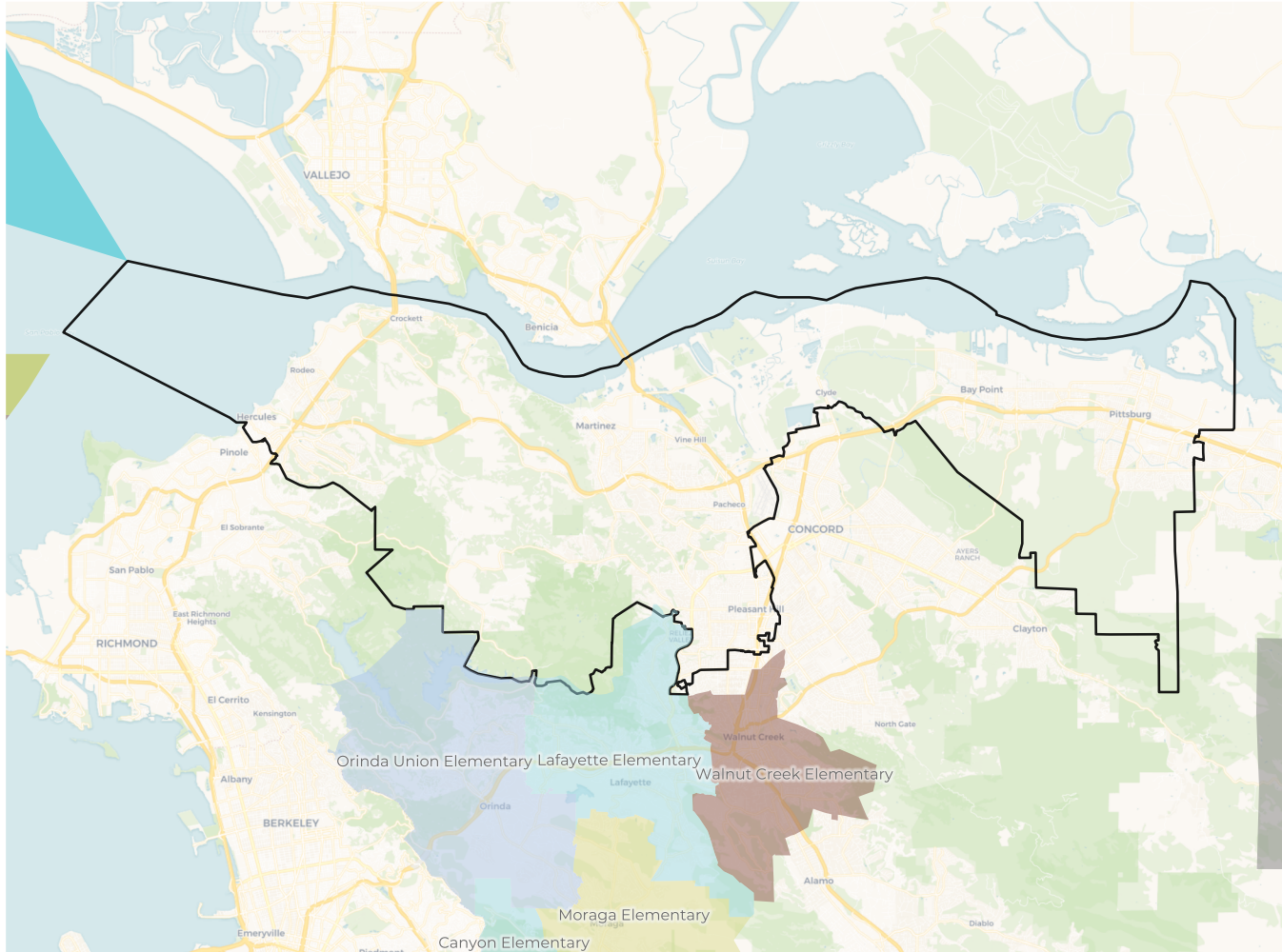
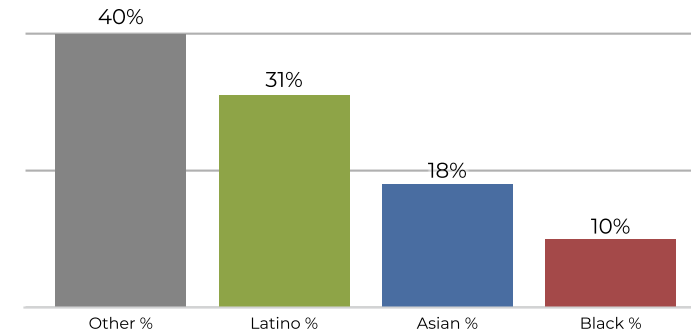
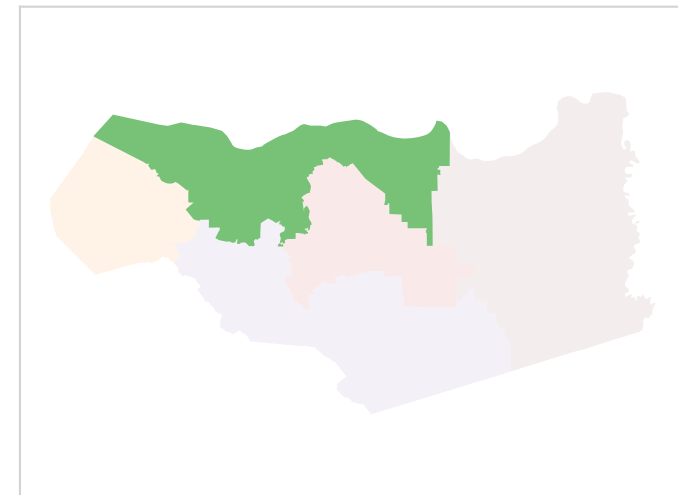
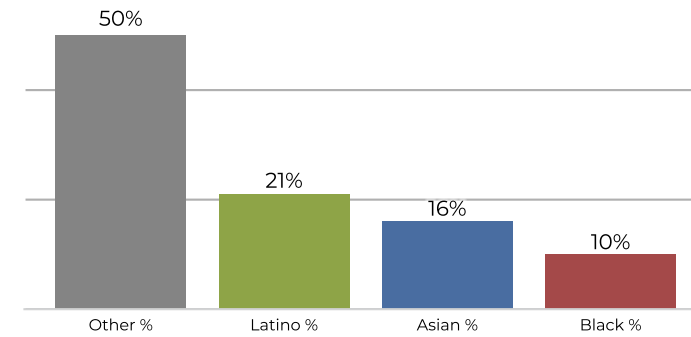
**2020 Census**



**Citizen Voting Age Population**

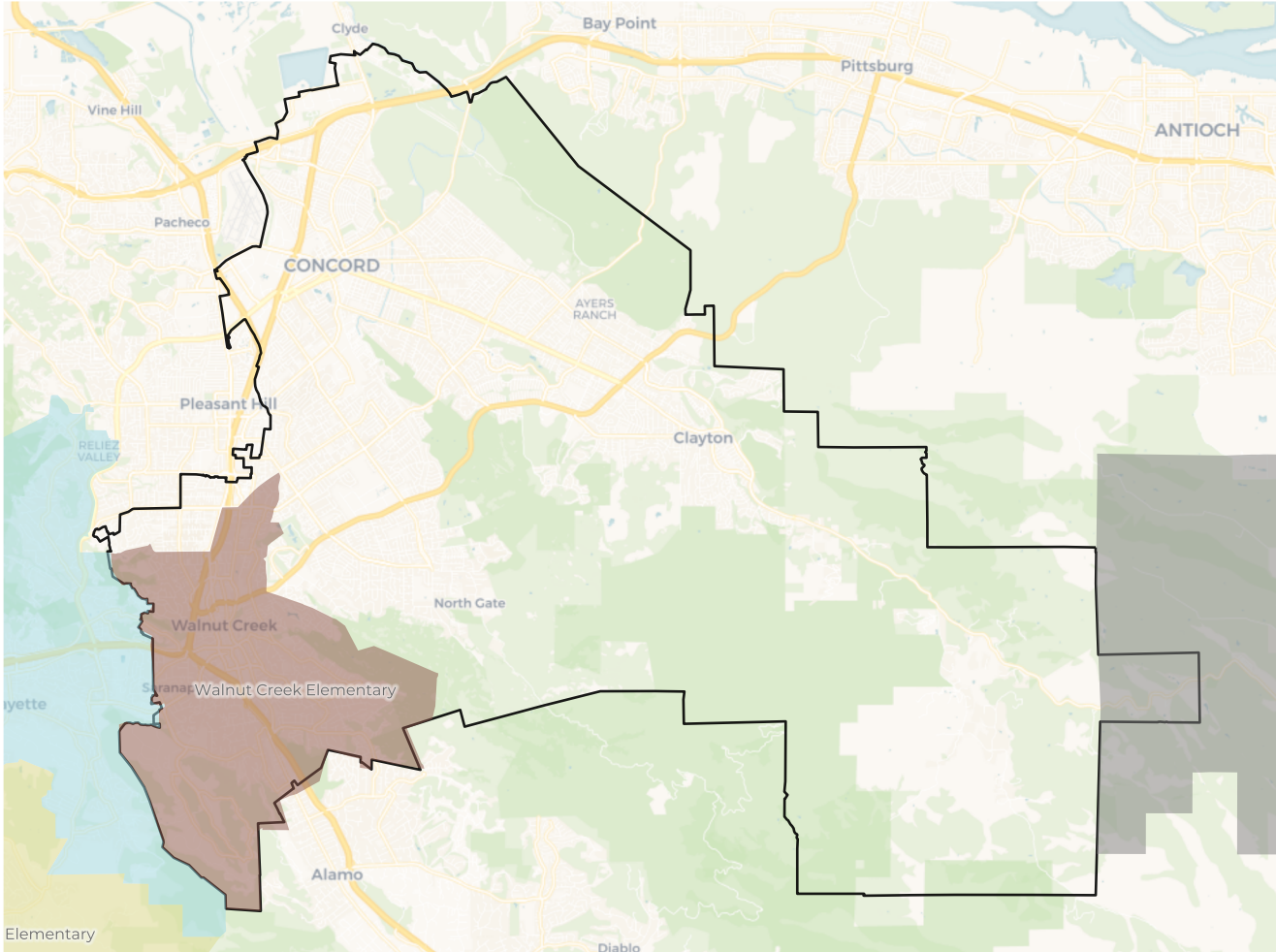


Population	Deviation	Deviation %	Other	Other %	Latino	Latino %	Asian	Asian %	Black	Black %
236,010	2,396	1.0%	66,940	28.4%	95,003	40.3%	40,760	17.3%	33,307	14.1%
Total CVAP	Other CVAP	Other CVAP %	Latino CVAP	Latino CVAP %	Asian CVAP	Asian CVAP %	Black CVAP	Black CVAP %		
140,908	52,449	37.2%	35,138	24.9%	26,038	18.5%	27,283	19.4%		

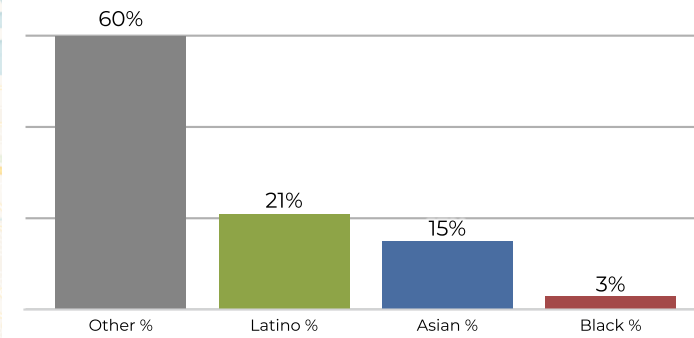
**District B**

**2020 Census**

**Citizen Voting Age Population**


Population	Deviation	Deviation %	Other	Other %	Latino	Latino %	Asian	Asian %	Black	Black %
226,779	-6,835	-2.9%	91,322	40.3%	70,471	31.1%	42,085	18.6%	22,901	10.1%
Total CVAP	Other CVAP	Other CVAP %	Latino CVAP	Latino CVAP %	Asian CVAP	Asian CVAP %	Black CVAP	Black CVAP %		
150,061	75,947	50.6%	32,854	21.9%	25,004	16.7%	16,256	10.8%		

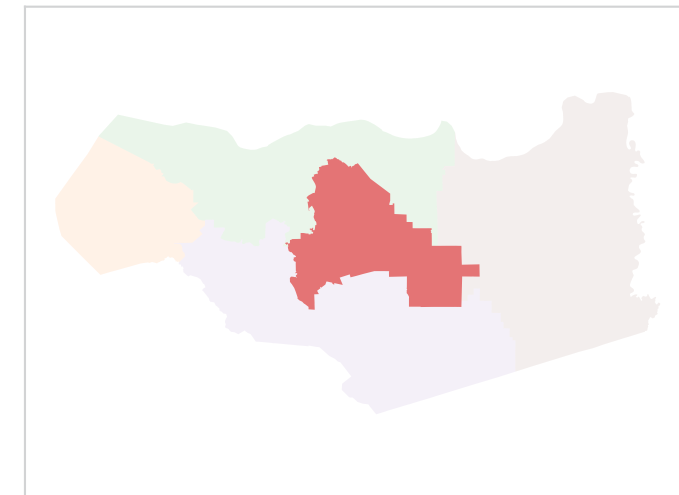
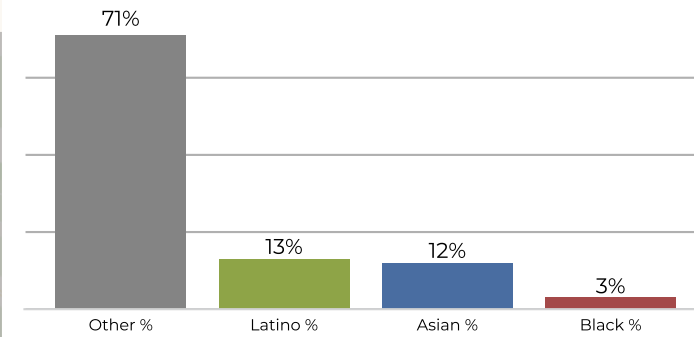
**District C**



**2020 Census**



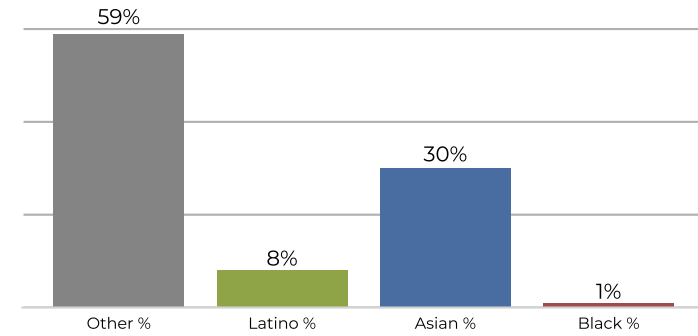
**Citizen Voting Age Population**



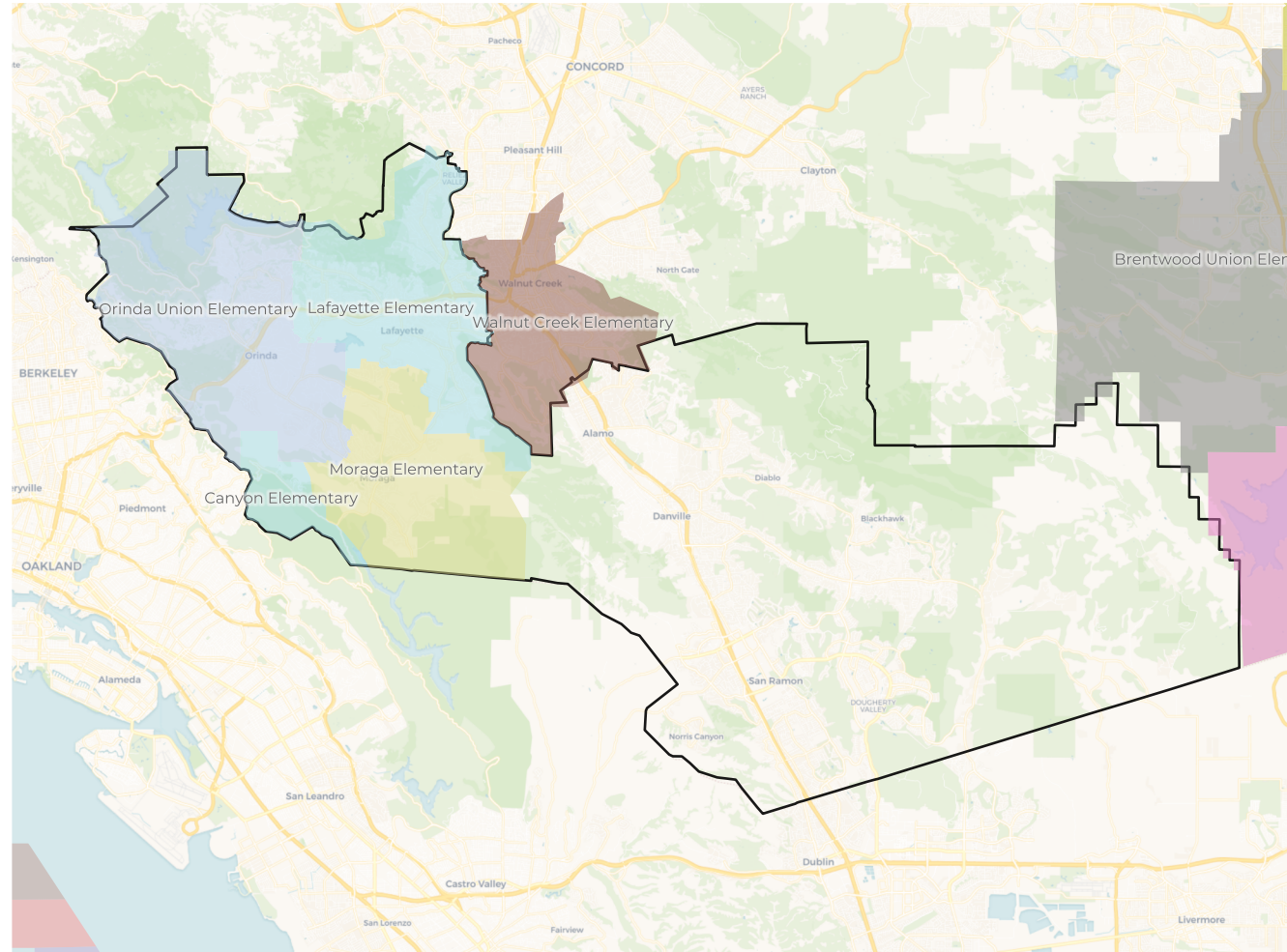
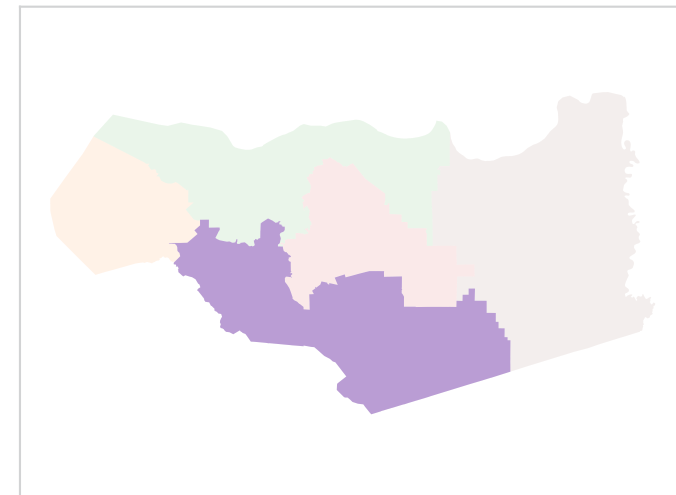
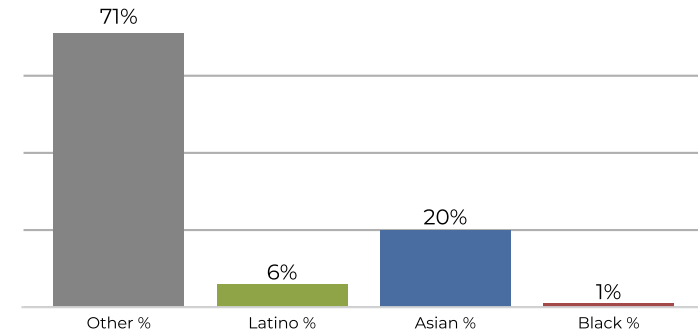
Population	Deviation	Deviation %	Other	Other %	Latino	Latino %	Asian	Asian %	Black	Black %
227,828	-5,786	-2.5%	136,919	60.1%	49,896	21.9%	34,194	15.0%	6,819	3.0%
Total CVAP	Other CVAP	Other CVAP %	Latino CVAP	Latino CVAP %	Asian CVAP	Asian CVAP %	Black CVAP	Black CVAP %		
162,627	115,554	71.1%	22,639	13.9%	19,452	12.0%	4,982	3.1%		

**District D**

**2020 Census**

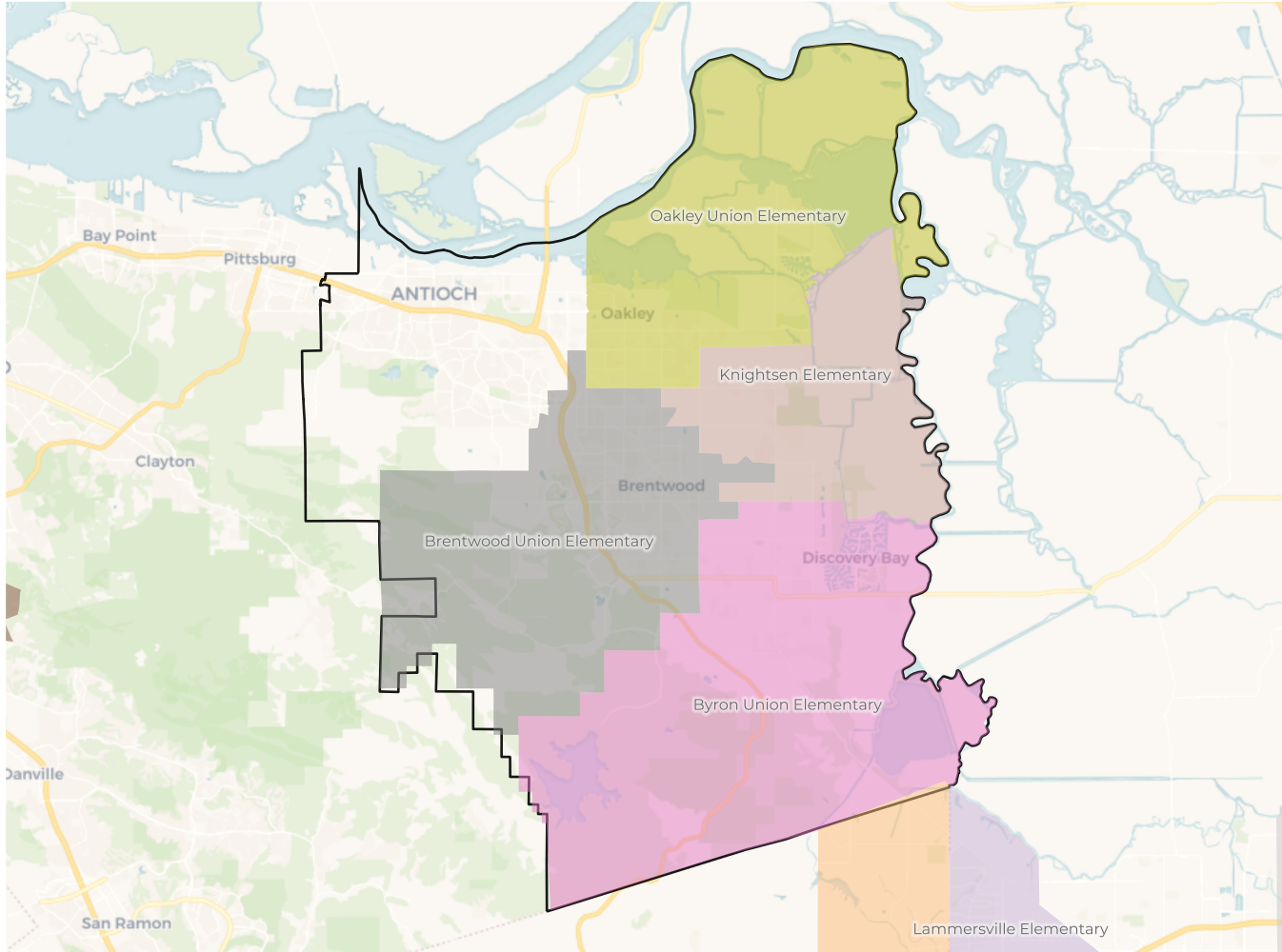


**Citizen Voting Age Population**

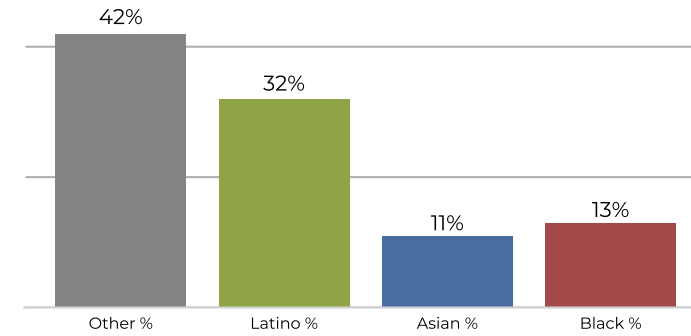


Population	Deviation	Deviation %	Other	Other %	Latino	Latino %	Asian	Asian %	Black	Black %
229,392	-4,222	-1.8%	137,462	59.9%	18,831	8.2%	69,433	30.3%	3,666	1.6%
Total CVAP	Other CVAP	Other CVAP %	Latino CVAP	Latino CVAP %	Asian CVAP	Asian CVAP %	Black CVAP	Black CVAP %		
147,379	105,632	71.7%	9,448	6.4%	29,948	20.3%	2,351	1.6%		

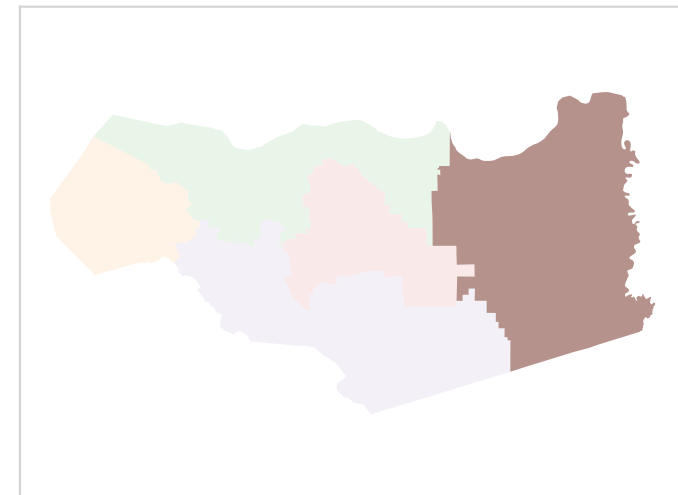
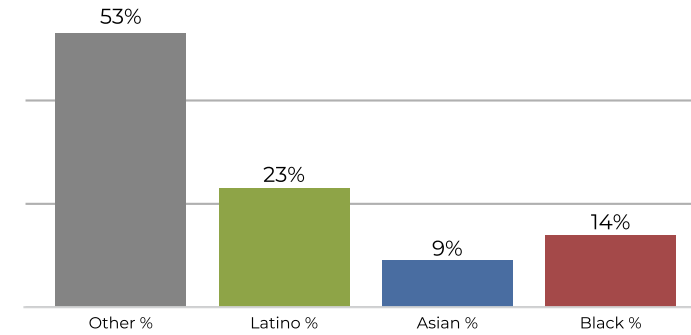
**District E**



**2020 Census**



**Citizen Voting Age Population**



Population	Deviation	Deviation %	Other	Other %	Latino	Latino %	Asian	Asian %	Black	Black %
248,060	14,446	6.2%	106,454	42.9%	81,224	32.7%	28,076	11.3%	32,306	13.0%
Total CVAP	Other CVAP	Other CVAP %	Latino CVAP	Latino CVAP %	Asian CVAP	Asian CVAP %	Black CVAP	Black CVAP %		
161,969	86,363	53.3%	37,637	23.2%	15,157	9.4%	22,812	14.1%		